



MIDLAND ZONE

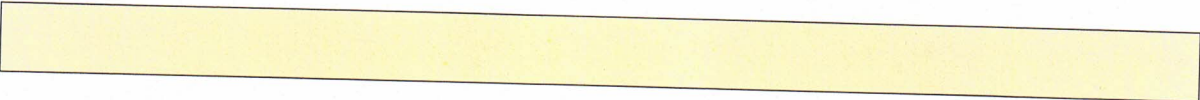
TEAM OF FOUR RIDE TEST 2

ARENA SET UP Arena 60m x 30m 10m Corner – H or M 20m H -E; M - B 20m E – K; B - F 10m K or F - Corner Opening at 'A' entry is 8m wide	
--	--

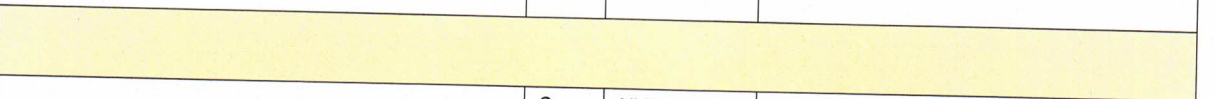
Penalties for errors of course in accordance with PCV Dressage Rules, except if a horse leaves the arena, this incurs a 10 point penalty, not elimination.

Penalties for errors of course in accordance with PCV Dressage Rules, except if a horse leaves the arena, this incurs a 10 point penalty, not elimination.

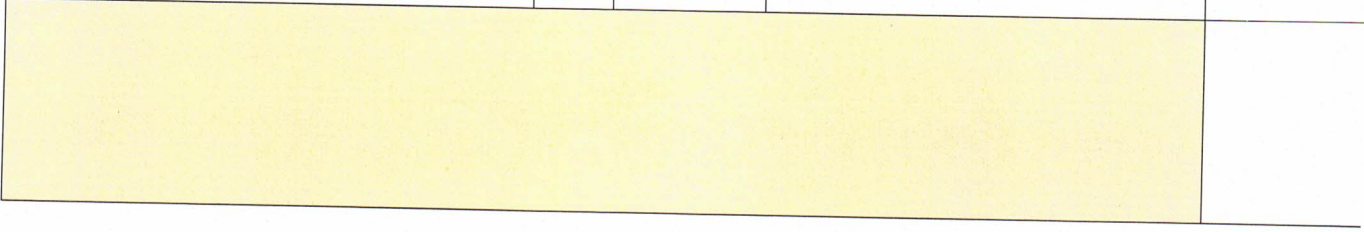
	1	A	Enter in pairs, Riders 3 & 2 in front. Riders 4 & 1 behind. 10 m apart.
		X	Halt in section, riders 4 & 1 going to outside. Salute. Proceed in walk.

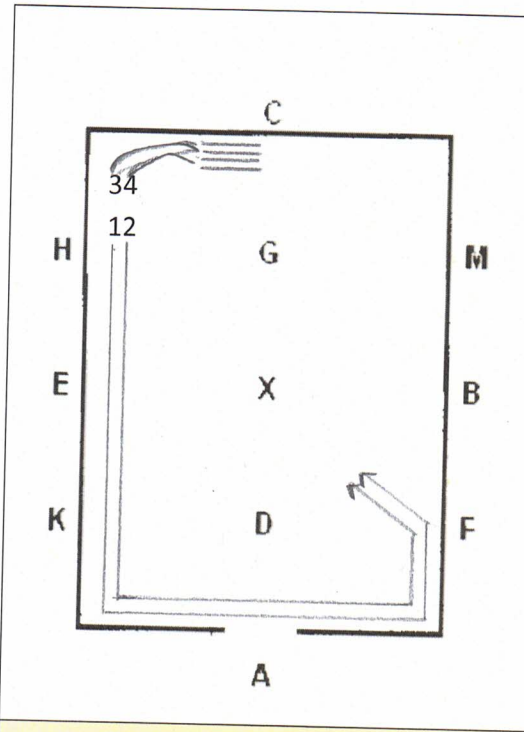


	2	C	Turn right.
		M-A	Working trot.

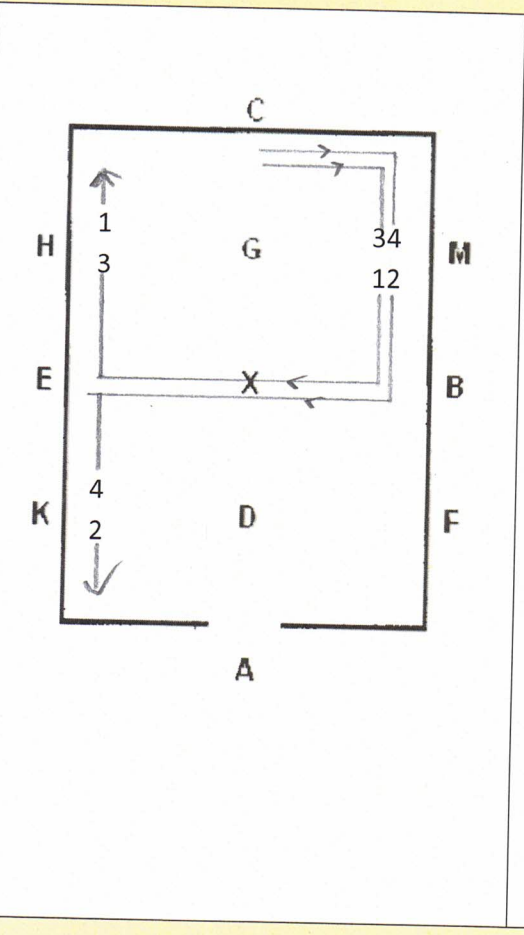
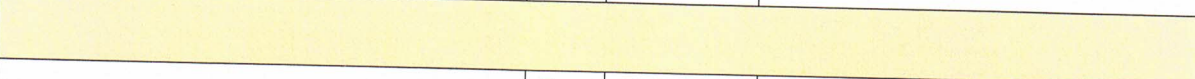


	3	KXM	Change rein across diagonal.



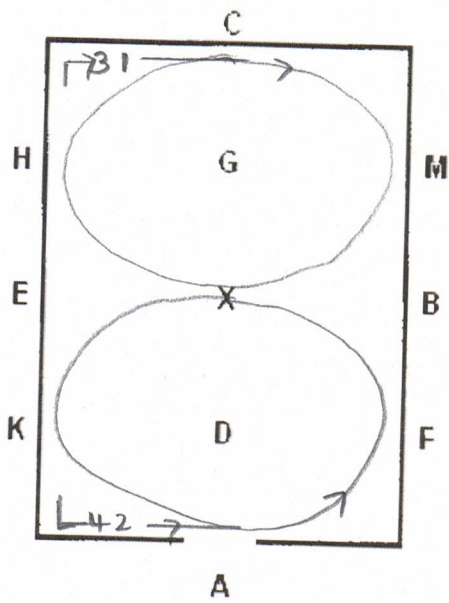


4	Between C & H	Riders form pairs, riders 3 & 4 dropping back.
	EKA	Rising trot.
	FXH	Change rein across diagonal.



5	C-B	Working Trot.
	B	Turn Right.
	E	Riders 1 & 3 turn right, single file. Riders 2 & 4 turn left, single file.





6

Between
H & C
AND
Between
K & A

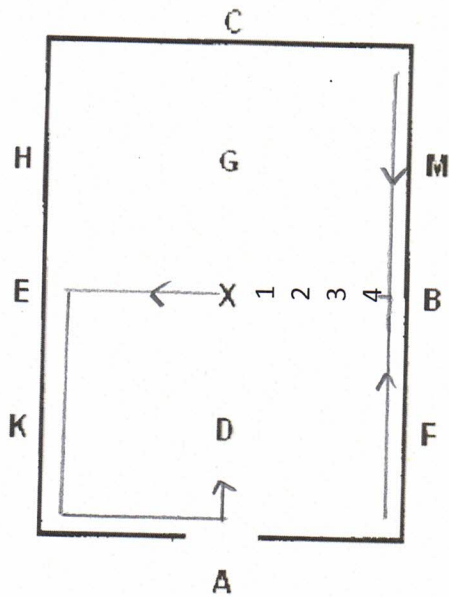
Canter.

C
AND
A

Canter 30m circle.

Upon
returning
to C & A

Trot.



7

B

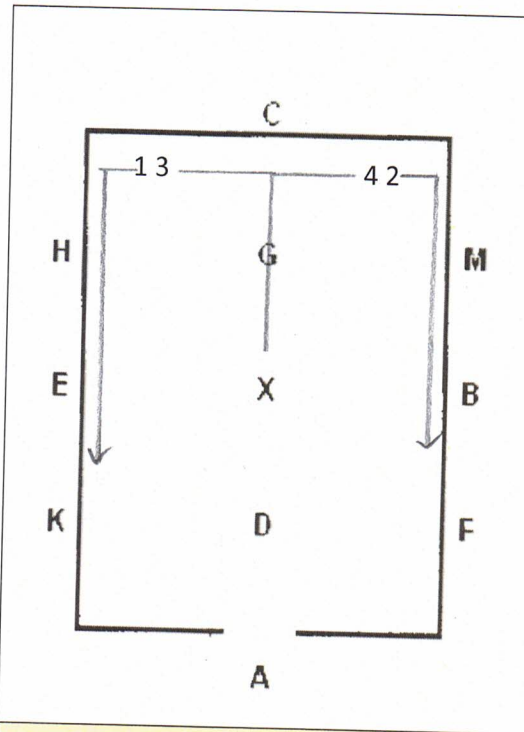
Turn single file in order 1, 2, 3, 4.

E

Turn left.

A

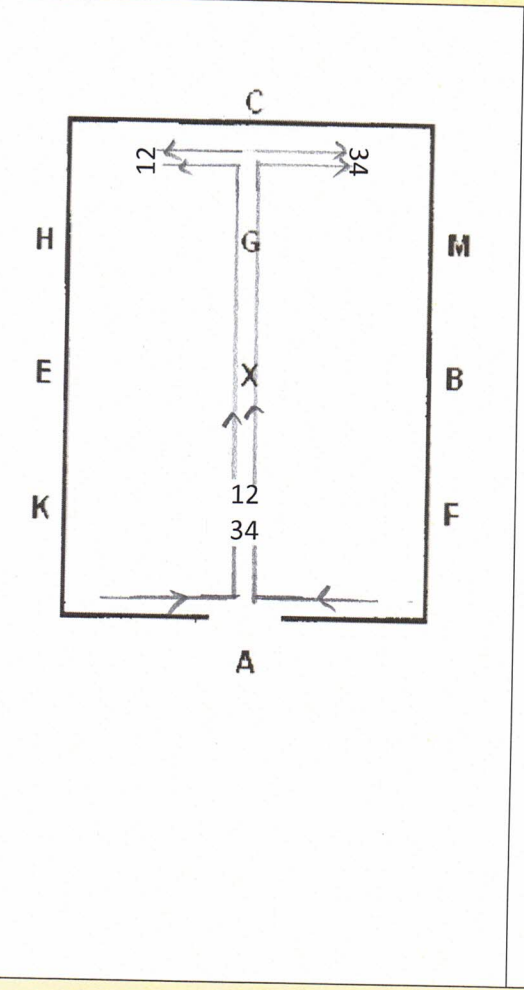
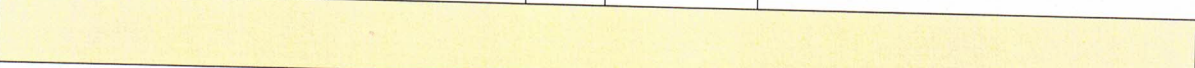
Turn up centre line.



8

C

Riders 1 & 3 turn left. Riders 2 & 4 turn right.
Proceed around arena in rising trot.



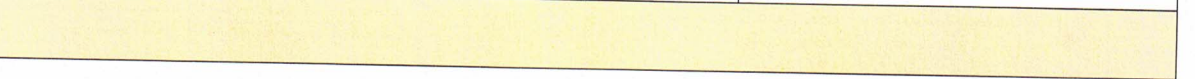
9

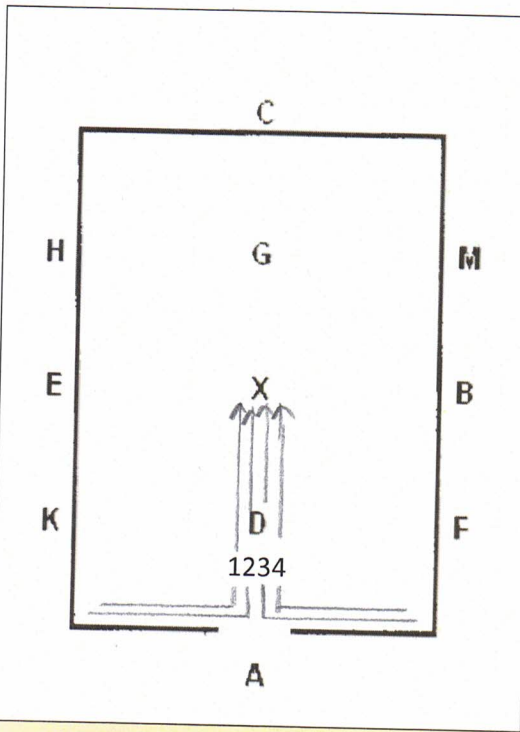
A

Turn up centre line, forming pairs 1 & 2, 3 & 4.

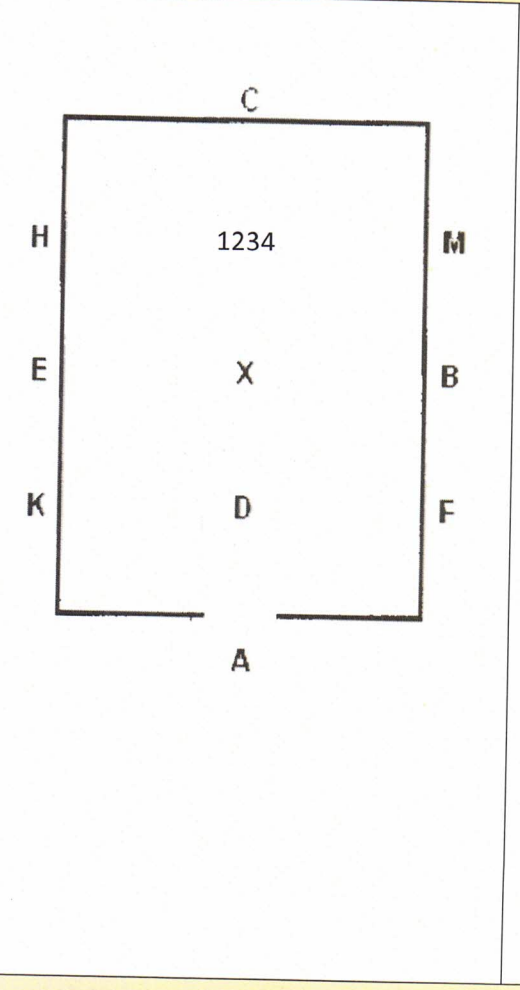
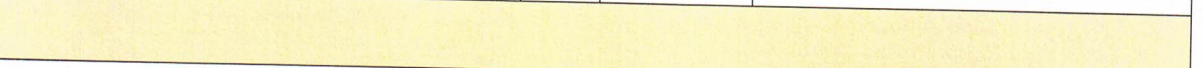
C

Riders 1 & 2 turn left.
Riders 3 & 4 turn right.
Proceed around arena in rising trot.

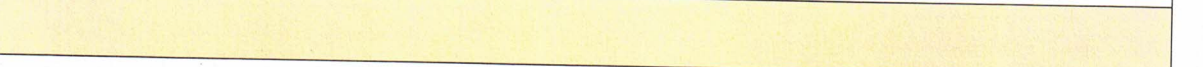




10	A	Turn up centre line, forming section.
	X	Walk



11	G	Halt. Salute. Leave the arena in pairs (either left or right) riders 1 & 2 leaving first, followed by riders 3 & 4.



	13	General Impression & Team Work
	14	Accuracy of Movements & evenness of paces.